



ColourSpace Calibration Report

LG OLED Edition



Probe:

Klein K10 / K10-A / K80

Probe Match:

[1500337] Jeti - 11_09_21

Profile Name:

SDR Cinema_2.3 Gamma Verification

Created:

2021-09-11

Target

Colour Space: Rec709 AWP - 2.3 Gamma

EOTF: 2.300

Luma Max: 102.283

Luma Min: 0.0002

CR: 434938:1

Profile

Gamut Coverage: 95%

Average EOTF: 2.296

Luma Max: 102.283

Luma Min: 0.0001

CR: 1137626:1

Profile Points: 1000

dE2000 Coverage

<1 1000 (100.00%)

>1 <2.3 0 (0.00%)

>2.3 0 (0.00%)

dE2000 Limits

Min: 0.0007

Max: 0.7687

Avg: 0.2168

dEITP Coverage

<1 782 (78.20%)

>1 <2.3 191 (19.10%)

>2.3 27 (2.70%)

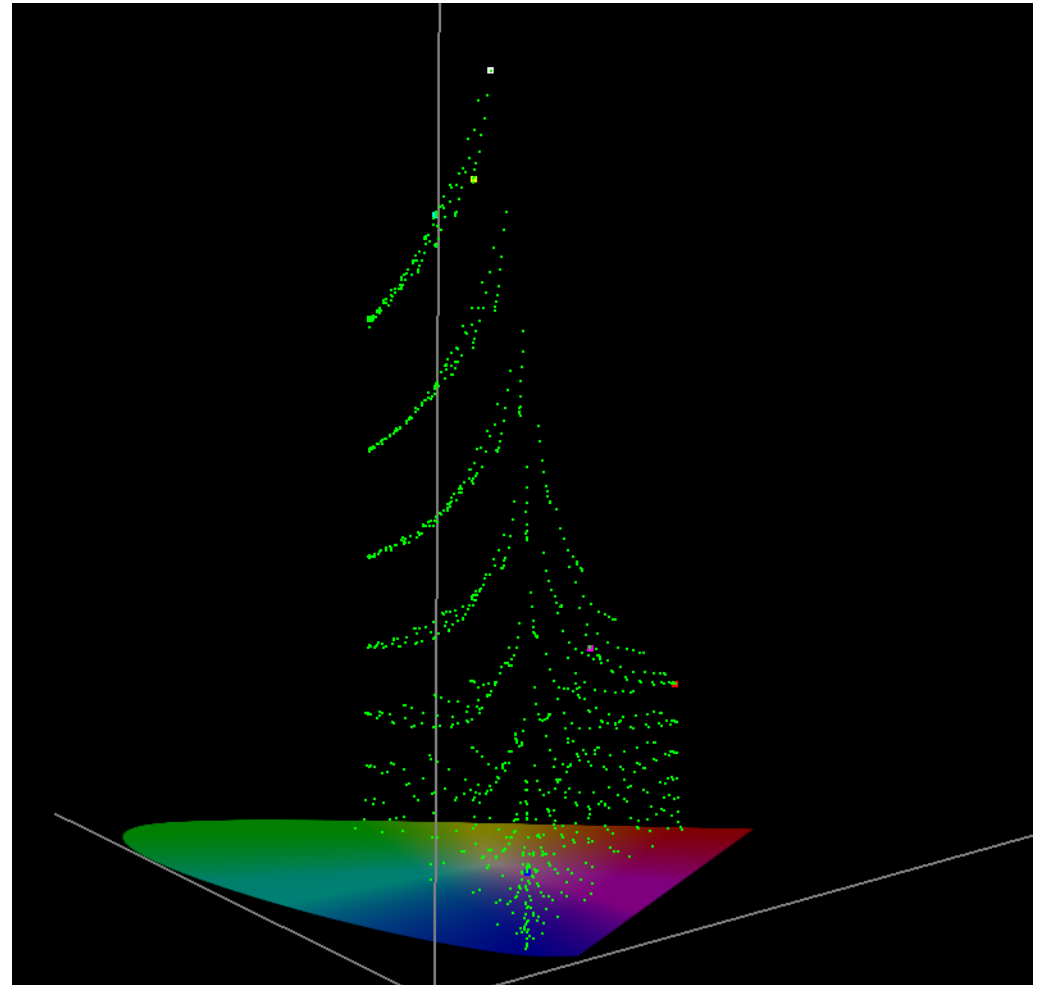
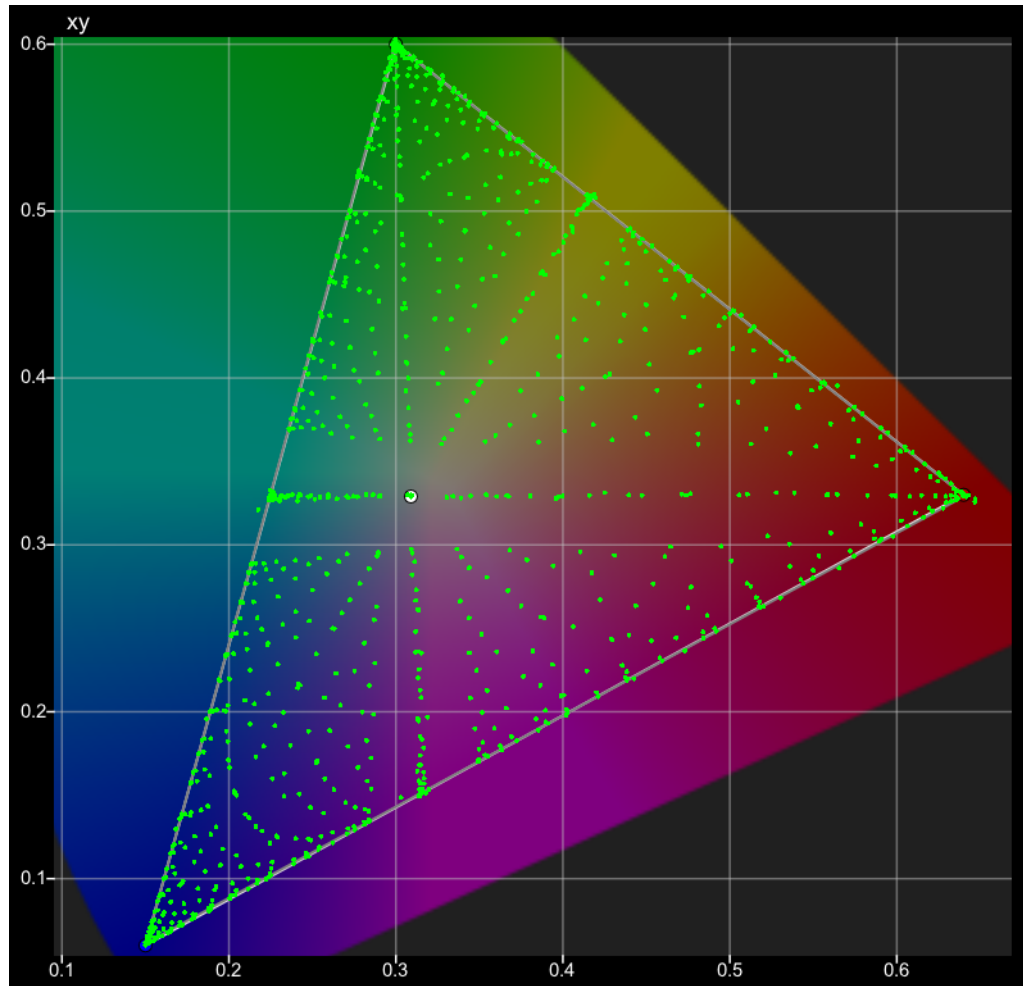
dEITP Limits

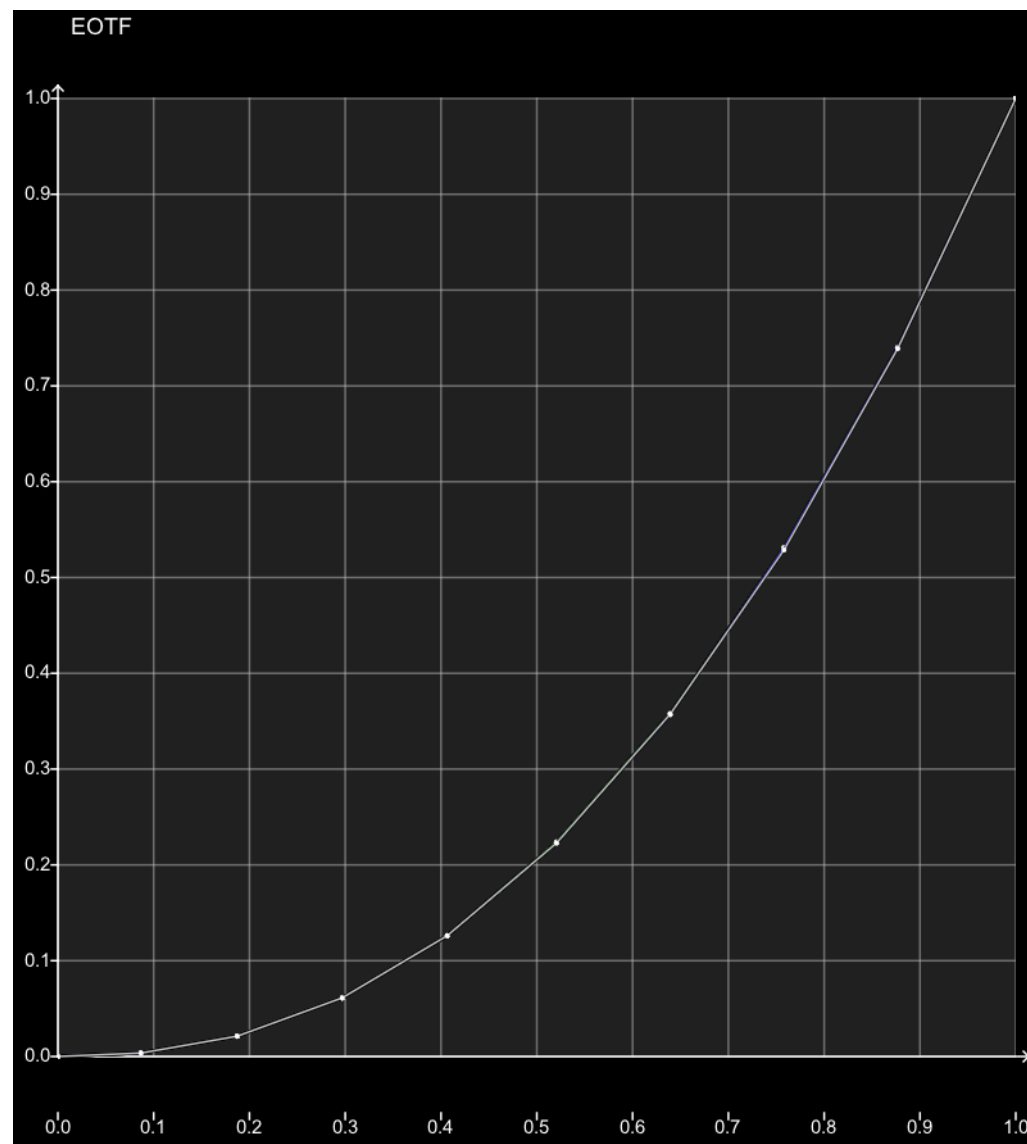
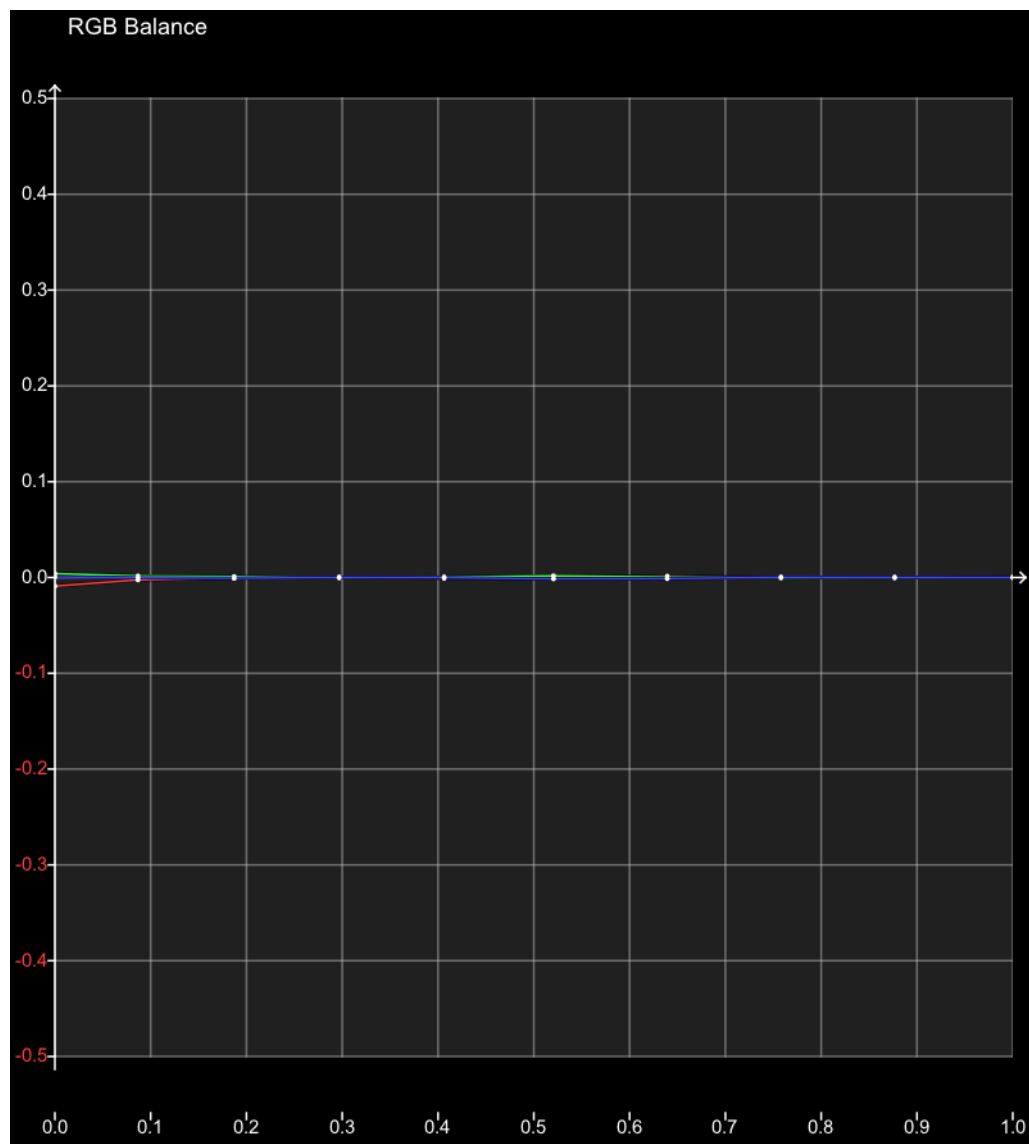
Min: 0.0250

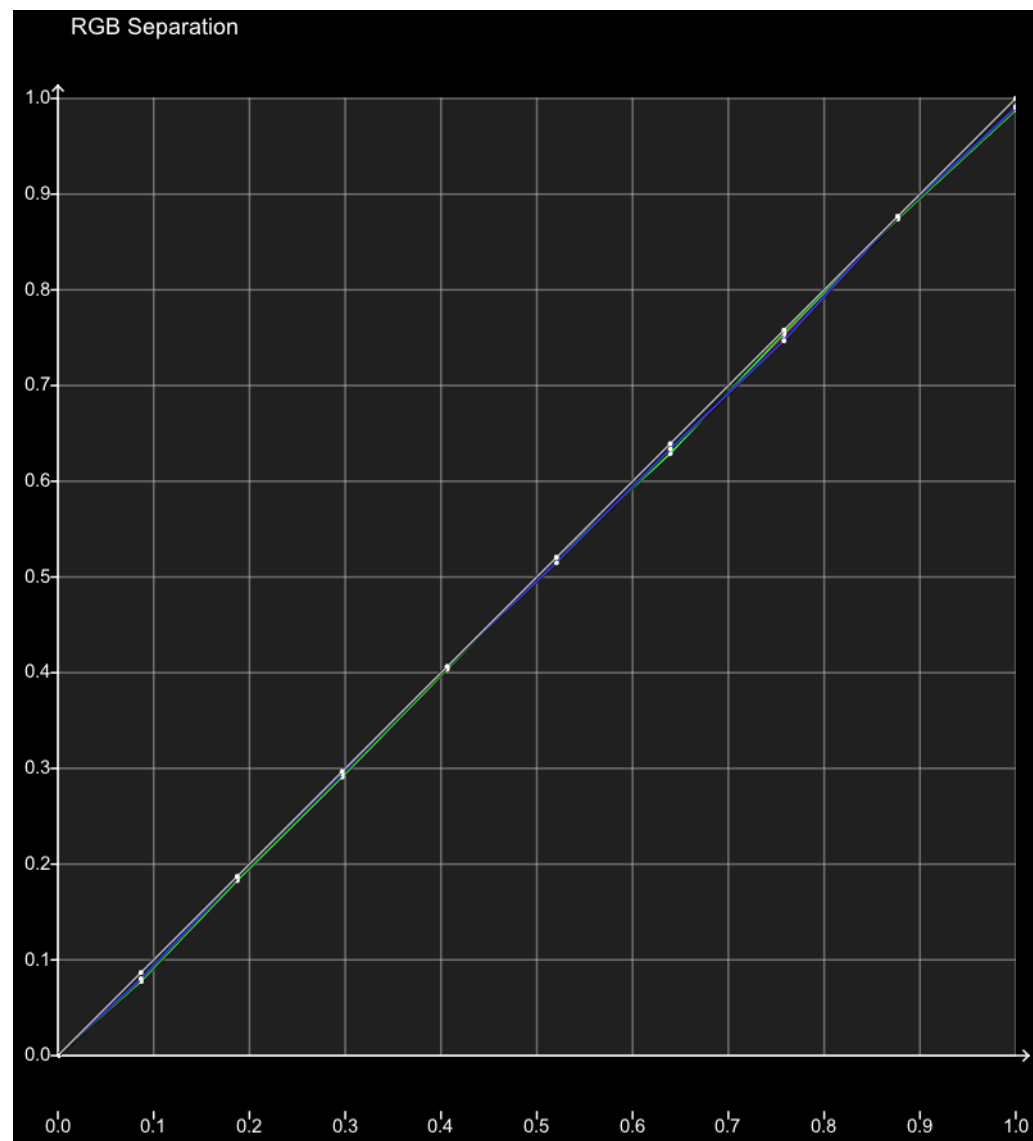
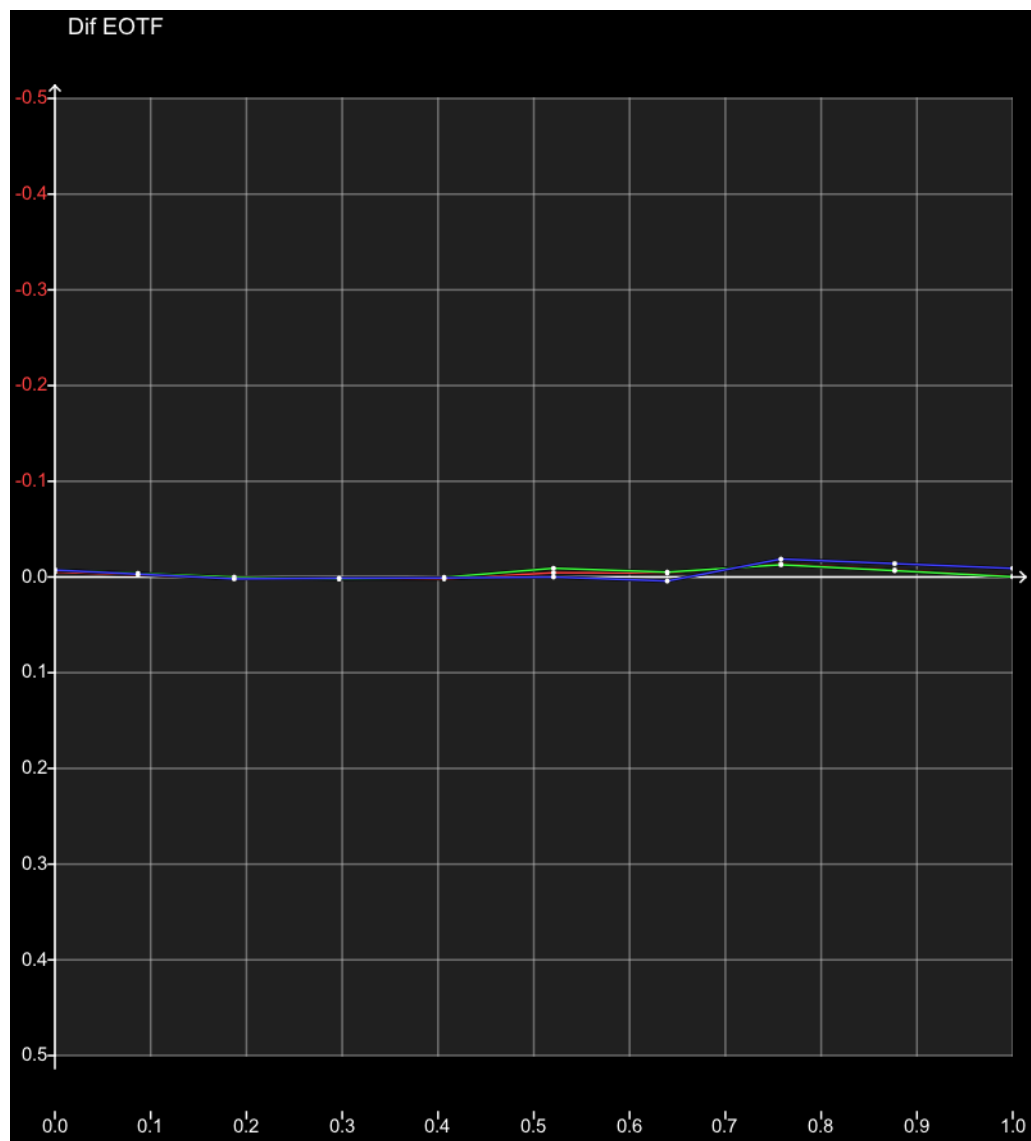
Max: 3.7748

Avg: 0.7466

Graphs







dE Primary

dE 2000 Grey

RGB	dE 2000
16, 16, 16	0.0007
35, 35, 35	0.0754
57, 57, 57	0.1216
81, 81, 81	0.0677
105, 105, 105	0.1385
130, 130, 130	0.4889
156, 156, 156	0.2173
182, 182, 182	0.1634
208, 208, 208	0.1127
235, 235, 235	0.0956

RGB	dE ITP
16, 16, 16	0.8539
35, 35, 35	0.3162
57, 57, 57	0.1408
81, 81, 81	0.1463
105, 105, 105	0.1329
130, 130, 130	0.5060
156, 156, 156	0.3010
182, 182, 182	0.2645
208, 208, 208	0.0918
235, 235, 235	0.0763

dE 2000 Red

RGB	dE 2000
35, 16, 16	0.2724
57, 16, 16	0.1270
81, 16, 16	0.1004
105, 16, 16	0.1788
130, 16, 16	0.1819
156, 16, 16	0.2959
182, 16, 16	0.3374
208, 16, 16	0.1649
235, 16, 16	0.1084

RGB	dE ITP
35, 16, 16	2.0392
57, 16, 16	2.2064
81, 16, 16	1.0232
105, 16, 16	1.0403
130, 16, 16	1.4878
156, 16, 16	1.0099
182, 16, 16	0.9605
208, 16, 16	0.9429
235, 16, 16	0.9987

dE 2000 Green

RGB	dE 2000
16, 35, 16	0.3930
16, 57, 16	0.2344
16, 81, 16	0.3775
16, 105, 16	0.2566
16, 130, 16	0.2605
16, 156, 16	0.4167
16, 182, 16	0.0455
16, 208, 16	0.0851
16, 235, 16	0.3690

RGB	dE ITP
16, 35, 16	2.9488
16, 57, 16	1.2288
16, 81, 16	1.5944
16, 105, 16	0.9652
16, 130, 16	0.7715
16, 156, 16	1.3170
16, 182, 16	0.1415
16, 208, 16	0.2485
16, 235, 16	1.1976

dE 2000 Blue

RGB	dE 2000
16, 16, 35	0.2819
16, 16, 57	0.0720
16, 16, 81	0.0973
16, 16, 105	0.1023
16, 16, 130	0.1980
16, 16, 156	0.1863
16, 16, 182	0.1781
16, 16, 208	0.3725
16, 16, 235	0.1506

RGB	dE ITP
16, 16, 35	1.0996
16, 16, 57	1.2436
16, 16, 81	0.4359
16, 16, 105	0.2480
16, 16, 130	0.5620
16, 16, 156	0.6168
16, 16, 182	0.5803
16, 16, 208	1.3380
16, 16, 235	0.4345

dE Secondary

dE 2000 Cyan

RGB	dE 2000
16, 35, 35	0.4547
16, 57, 57	0.4903
16, 81, 81	0.2148
16, 105, 105	0.1086
16, 130, 130	0.5100
16, 156, 156	0.4894
16, 182, 182	0.2408
16, 208, 208	0.4932
16, 235, 235	0.0524

RGB	dE ITP
16, 35, 35	3.4652
16, 57, 57	0.8071
16, 81, 81	0.3748
16, 105, 105	0.3669
16, 130, 130	1.1206
16, 156, 156	0.8162
16, 182, 182	0.6683
16, 208, 208	0.7217
16, 235, 235	0.0887

dE 2000 Magenta

RGB	dE 2000
35, 16, 35	0.4454
57, 16, 57	0.1303
81, 16, 81	0.1767
105, 16, 105	0.3361
130, 16, 130	0.4444
156, 16, 156	0.1853
182, 16, 182	0.2149
208, 16, 208	0.1513
235, 16, 235	0.0776

RGB	dE ITP
35, 16, 35	3.7748
57, 16, 57	0.5669
81, 16, 81	1.3039
105, 16, 105	2.1554
130, 16, 130	2.6926
156, 16, 156	0.9611
182, 16, 182	0.9291
208, 16, 208	0.6059
235, 16, 235	0.3326

dE 2000 Yellow

RGB	dE 2000
35, 35, 16	0.5023
57, 57, 16	0.5235
81, 81, 16	0.2018
105, 105, 16	0.3452
130, 130, 16	0.2553
156, 156, 16	0.2922
182, 182, 16	0.0095
208, 208, 16	0.1778
235, 235, 16	0.2625

RGB	dE ITP
35, 35, 16	3.1166
57, 57, 16	1.6766
81, 81, 16	0.6389
105, 105, 16	1.0055
130, 130, 16	0.7097
156, 156, 16	0.8665
182, 182, 16	0.0250
208, 208, 16	0.6455
235, 235, 16	0.7614
