

**Profile Name:** G1 verif 202-09-17  
**Created:** 2021-09-18

Probe: i1Display Pro OEM  
Probe Match: [1104877] G1  
i1Pro2 2021-09-16  
Integration: 0.75  
Intelligent Int.: True 1  
Stabilisation: True 0.35

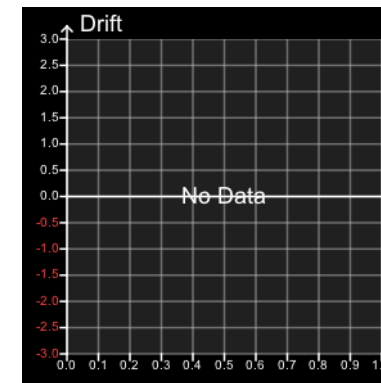
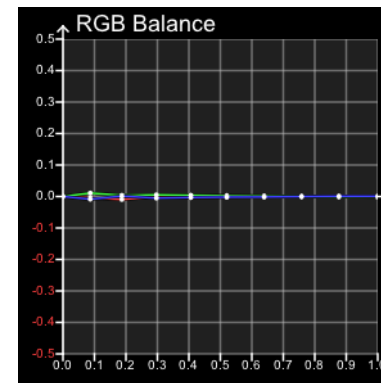
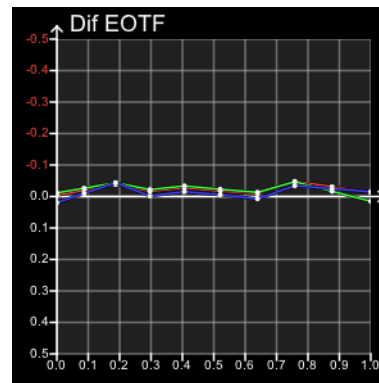
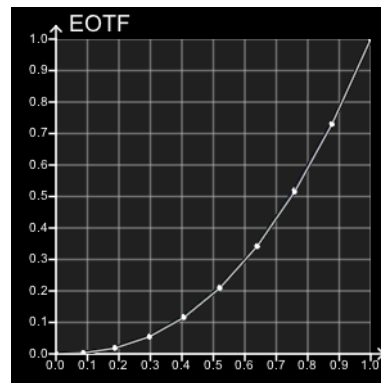
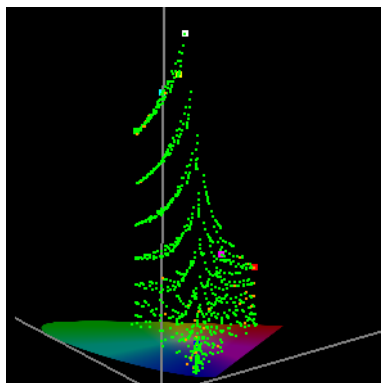
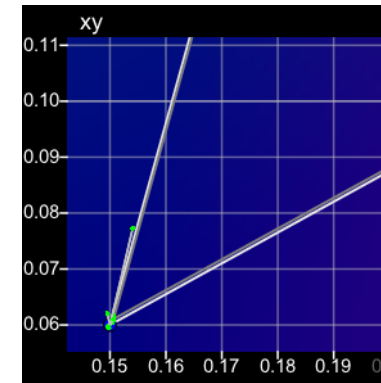
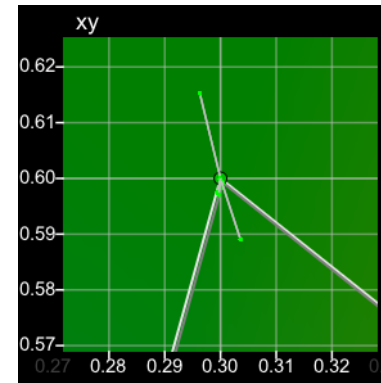
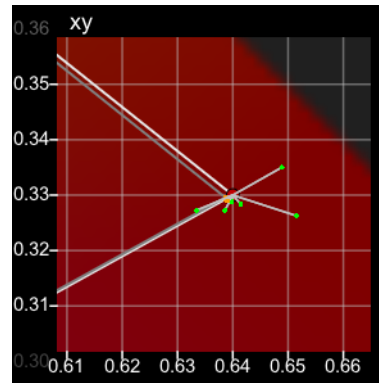
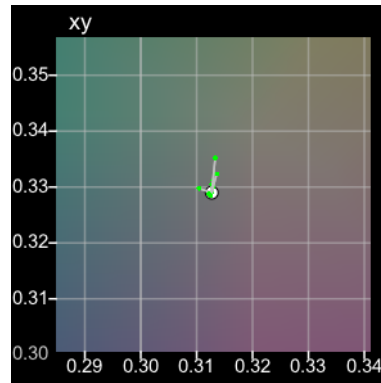
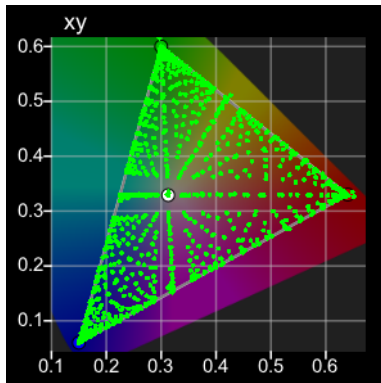
Target Colour Space: Rec709  
Target Luma Max: 96.5922  
Target Luma Min: 0.0000  
Target CR: Inf

Gamut Coverage: 93%  
Profile Luma Max: 96.5922  
Profile Luma Min: 0.0000  
Profile CR: Inf

Profile Points: 1000

**dE00 Coverage**  
<1: 1000 (100.00%)  
>1 <2.3: 0 (0.00%)  
>2.3: 0 (0.00%)

**dE00 Limits**  
Min: 0.0001  
Max: 0.9863  
Avg: 0.2174



## dE Primary

### dE 2000 Grey

RGB	dE 2000
16, 16, 16	0.0001
35, 35, 35	0.3552
57, 57, 57	0.8030
81, 81, 81	0.9233
105, 105, 105	0.9863
130, 130, 130	0.8181
156, 156, 156	0.5277
182, 182, 182	0.3044
208, 208, 208	0.3377
235, 235, 235	0.2753

### dE 2000 Red

RGB	dE 2000
35, 16, 16	0.3252
57, 16, 16	0.3467
81, 16, 16	0.2019
105, 16, 16	0.3767
130, 16, 16	0.2889
156, 16, 16	0.3834
182, 16, 16	0.5473
208, 16, 16	0.4469
235, 16, 16	0.5254

### dE 2000 Green

RGB	dE 2000
16, 35, 16	0.2791
16, 57, 16	0.3951
16, 81, 16	0.0838
16, 105, 16	0.1926
16, 130, 16	0.2119
16, 156, 16	0.2413
16, 182, 16	0.2639
16, 208, 16	0.1666
16, 235, 16	0.3801

### dE 2000 Blue

RGB	dE 2000
16, 16, 35	0.3910
16, 16, 57	0.1655
16, 16, 81	0.1051
16, 16, 105	0.0999
16, 16, 130	0.3558
16, 16, 156	0.1494
16, 16, 182	0.1421
16, 16, 208	0.2380
16, 16, 235	0.1502

## dE Secondary

### dE 2000 Cyan

RGB	dE 2000
16, 35, 35	0.5094
16, 57, 57	0.4124
16, 81, 81	0.1887
16, 105, 105	0.2217
16, 130, 130	0.2642
16, 156, 156	0.3038
16, 182, 182	0.2719
16, 208, 208	0.2021
16, 235, 235	0.3257

### dE 2000 Magenta

RGB	dE 2000
35, 16, 35	0.2211
57, 16, 57	0.3625
81, 16, 81	0.4219
105, 16, 105	0.1709
130, 16, 130	0.0729
156, 16, 156	0.0684
182, 16, 182	0.1274
208, 16, 208	0.1780
235, 16, 235	0.0852

### dE 2000 Yellow

RGB	dE 2000
35, 35, 16	0.1991
57, 57, 16	0.2299
81, 81, 16	0.4385
105, 105, 16	0.3763
130, 130, 16	0.0685
156, 156, 16	0.2838
182, 182, 16	0.1361
208, 208, 16	0.2867
235, 235, 16	0.1644