

Profile Name: LG C9 dark verif 2021-08-05
Created: 2021-08-05

Probe: C6 HDR
Probe Match: i1 Pro2
Integration: 0.75
Intelligent Int.: True 1
Stabilisation: True 0.35
Preroll: True 2.3

Target Colour Space: Rec709
Target Luma Max: 100.727
Target Luma Min: 0.0000
Target CR: Inf

Gamut Coverage: 91%
Profile Luma Max: 101.507
Profile Luma Min: 0.0000
Profile CR: Inf

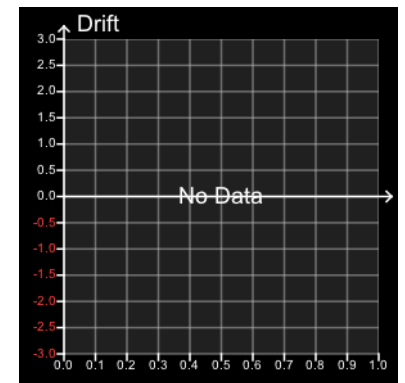
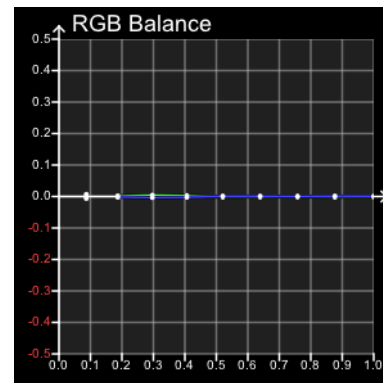
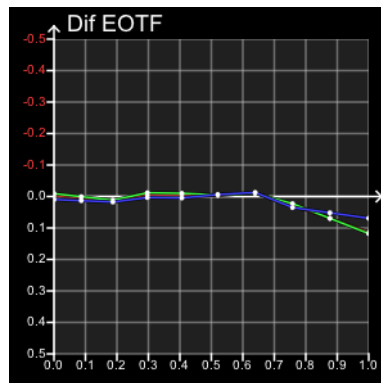
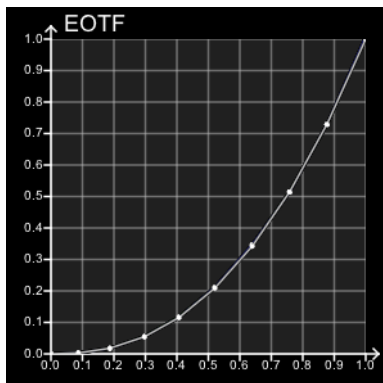
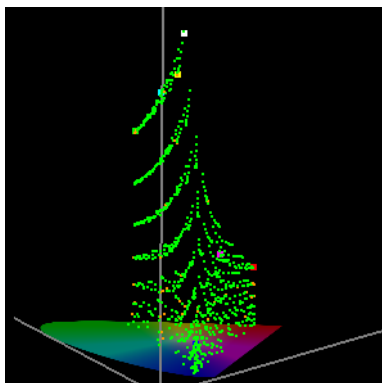
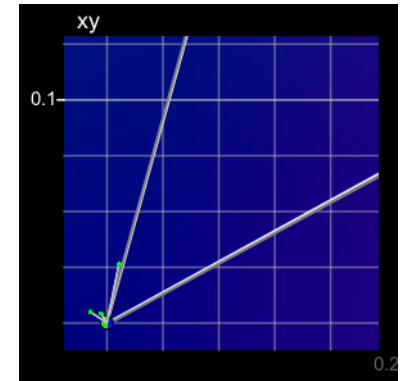
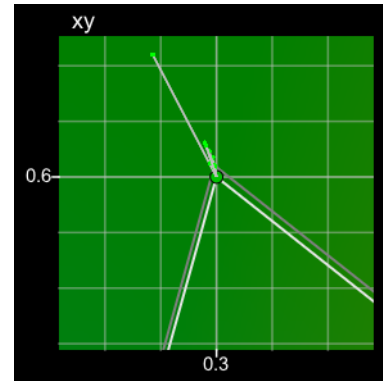
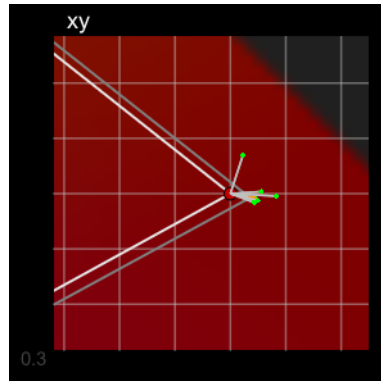
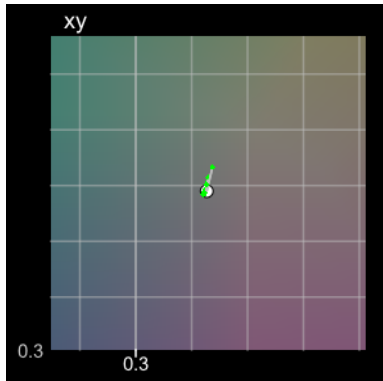
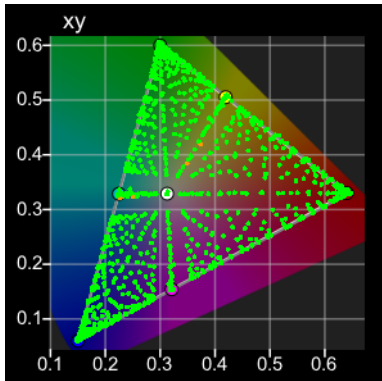
Profile Points: 1000

dE00 Coverage

<1: 996 (99.60%)
>1 <2.3: 4 (0.40%)
>2.3: 0 (0.00%)

dE00 Limits

Min: 0.0001
Max: 1.3969
Avg: 0.2313



dE Primary

dE 2000 Grey

RGB	dE 2000
16, 16, 16	0.0001
35, 35, 35	0.2007
57, 57, 57	0.2784
81, 81, 81	0.7739
105, 105, 105	0.6885
130, 130, 130	0.3189
156, 156, 156	0.3415
182, 182, 182	0.2850
208, 208, 208	0.3294
235, 235, 235	0.2748

dE 2000 Red

RGB	dE 2000
35, 16, 16	0.1837
57, 16, 16	0.3777
81, 16, 16	0.2129
105, 16, 16	0.2054
130, 16, 16	0.2811
156, 16, 16	0.3716
182, 16, 16	0.5091
208, 16, 16	0.5823
235, 16, 16	0.4830

dE 2000 Green

RGB	dE 2000
16, 35, 16	0.2749
16, 57, 16	0.0729
16, 81, 16	0.3905
16, 105, 16	0.3820
16, 130, 16	0.3720
16, 156, 16	0.2763
16, 182, 16	0.1997
16, 208, 16	0.1585
16, 235, 16	0.3188

dE 2000 Blue

RGB	dE 2000
16, 16, 35	0.2571
16, 16, 57	0.5231
16, 16, 81	0.3166
16, 16, 105	0.2032
16, 16, 130	0.1210
16, 16, 156	0.0930
16, 16, 182	0.0915
16, 16, 208	0.0986
16, 16, 235	0.0590

dE Secondary

dE 2000 Cyan

RGB	dE 2000
16, 35, 35	0.2070
16, 57, 57	0.7243
16, 81, 81	0.2781
16, 105, 105	0.2902
16, 130, 130	0.1958
16, 156, 156	0.4602
16, 182, 182	0.4090
16, 208, 208	0.1532
16, 235, 235	0.4996

dE 2000 Magenta

RGB	dE 2000
35, 16, 35	0.1946
57, 16, 57	0.2239
81, 16, 81	0.2148
105, 16, 105	0.2621
130, 16, 130	0.1521
156, 16, 156	0.2555
182, 16, 182	0.2898
208, 16, 208	0.2821
235, 16, 235	0.2562

dE 2000 Yellow

RGB	dE 2000
35, 35, 16	0.6041
57, 57, 16	0.5070
81, 81, 16	0.3762
105, 105, 16	0.3890
130, 130, 16	0.3895
156, 156, 16	0.2015
182, 182, 16	0.2988
208, 208, 16	0.3156
235, 235, 16	0.2634