

Client Name: MySelf
Calibration Date: 2022-04-08

Probe: i1Display Pro OEM Target Colour Space: Rec709
 Probe Cal: [3002788] i1Pro 3Target EOTF: 2.400
 LG Oled 83C1 2022-04-07
 Integration: 0.75
 Intelligent Int.: True 1
 Stabilisation: True 0.35

Before Profile:

2022-04-08_profiling_L33_K82_F52_w-2PT-Sm
 WB_matched

Gamut Coverage: 98%
 Average EOTF: 2.224
 Profile Luma Max: 103.058
 Profile Luma Min: 0.0000
 Profile CR: Inf

Profile Points: 4913

dE00 Coverage

<1	275	(5.60%)
>1 <2.3	1142	(23.24%)
>2.3	3496	(71.16%)

dE00 Limits

Min:	0.0001
Max:	7.3111
Avg:	3.0012

After Profile:

2022-04-08_verify_709_L33_K82_F52_matched

Gamut Coverage: 85%
 Average EOTF: 2.374
 Profile Luma Max: 100.447
 Profile Luma Min: 0.0000
 Profile CR: Inf

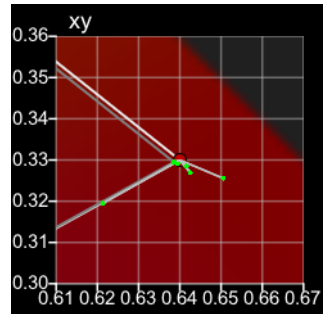
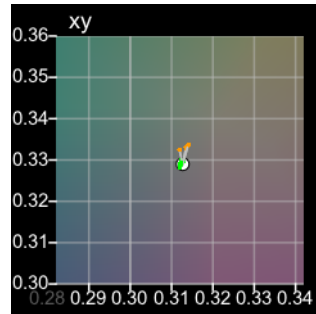
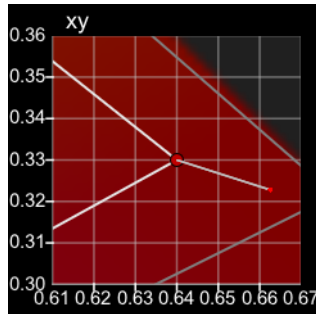
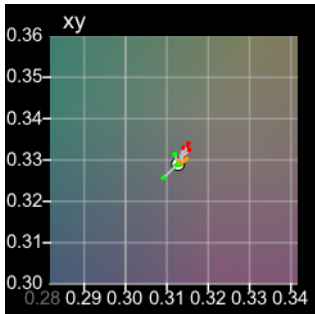
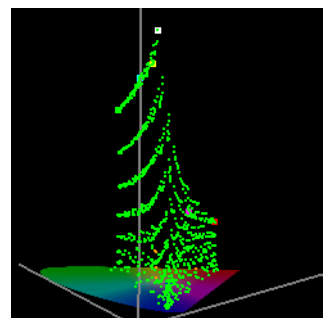
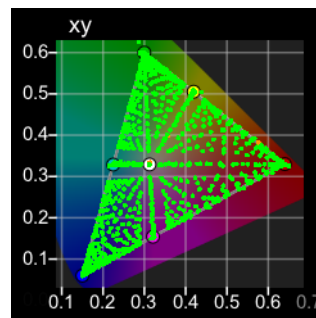
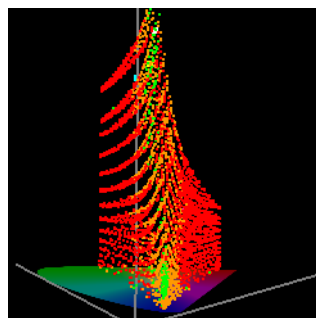
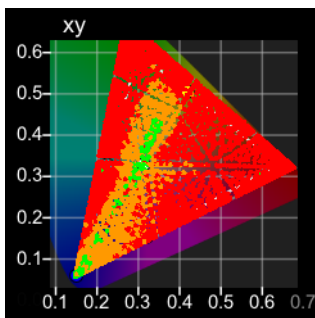
Profile Points: 1000

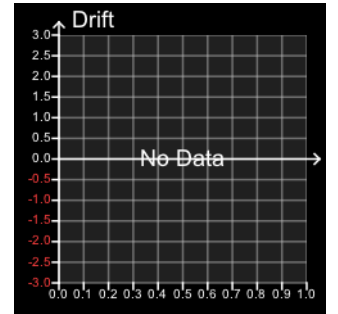
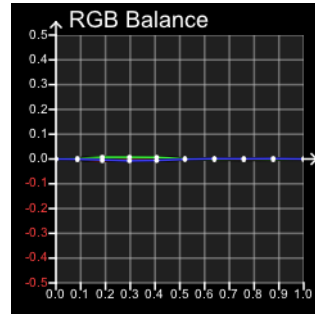
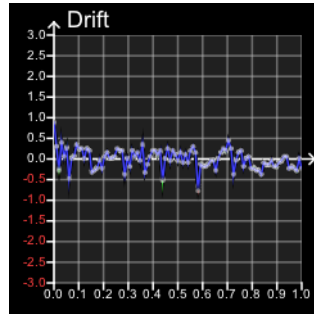
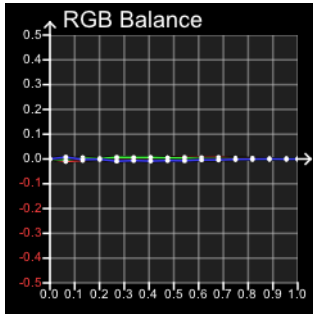
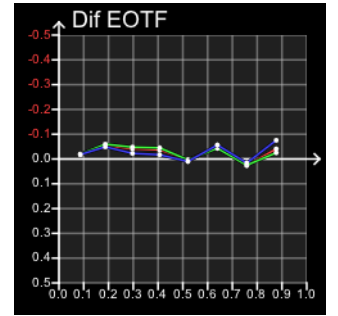
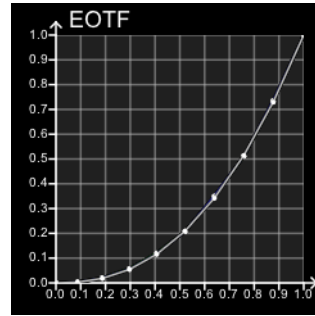
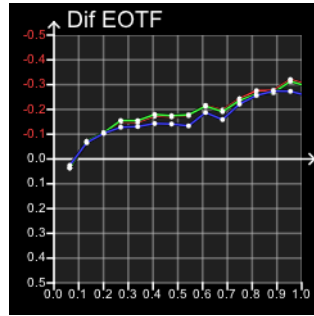
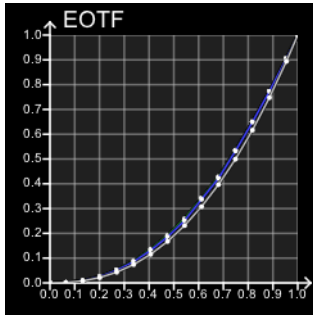
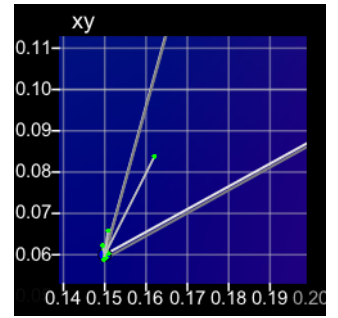
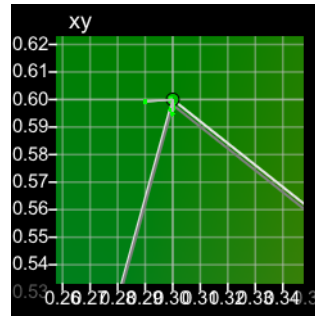
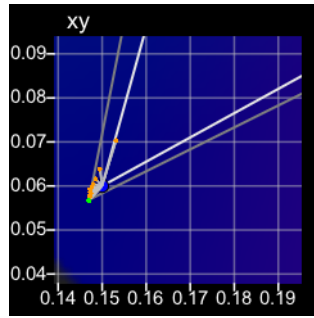
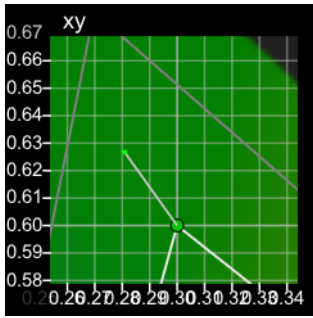
dE00 Coverage

<1	995	(99.50%)
>1 <2.3	5	(0.50%)
>2.3	0	(0.00%)

dE00 Limits

Min:	0.0001
Max:	1.5557
Avg:	0.2737





dE Primary

dE 2000 Grey

RGB	dE 2000	dE 1976
16, 16, 16	0.0001	0.0001
30, 30, 30	0.0883	0.1296
45, 45, 45	0.8588	1.1655
60, 60, 60	1.2699	1.8821
75, 75, 75	2.3712	3.0229
90, 90, 90	2.5383	2.9638
105, 105, 105	3.1411	3.3739
120, 120, 120	3.0249	3.0136
135, 135, 135	2.7019	2.8831
150, 150, 150	2.4164	2.8526
165, 165, 165	1.8076	2.2315
180, 180, 180	1.5801	2.1499
195, 195, 195	1.3012	1.7979
210, 210, 210	0.7528	1.1545
225, 225, 225	0.3588	0.5669
235, 235, 235	0.0438	0.0349
255, 255, 255	0.5914	1.0129

dE 2000 Red

RGB	dE 2000	dE 1976
30, 16, 16	0.2528	0.1879

dE 2000 Grey

RGB	dE 2000	dE 1976
16, 16, 16	0.0001	0.0001
35, 35, 35	0.0988	0.1320
57, 57, 57	1.1485	1.2323
81, 81, 81	1.3620	1.3261
105, 105, 105	1.5557	1.3803
130, 130, 130	0.2888	0.2363
156, 156, 156	0.5049	0.5892
182, 182, 182	0.4878	0.3887
208, 208, 208	0.3861	0.3987
235, 235, 235	0.4762	0.3212

dE 2000 Red

RGB	dE 2000	dE 1976
35, 16, 16	0.2188	0.1966

45,	16,	16	2.9245	3.1593
60,	16,	16	3.9163	7.3471
75,	16,	16	3.4276	8.1716
90,	16,	16	3.4704	9.5441
105,	16,	16	3.7730	11.4997
120,	16,	16	3.8393	12.7871
135,	16,	16	3.9630	14.3403
150,	16,	16	4.3389	16.5665
165,	16,	16	4.7499	18.7946
180,	16,	16	5.1926	21.2072
195,	16,	16	5.6074	23.4255
210,	16,	16	6.1412	26.0436
225,	16,	16	6.6714	28.8995
235,	16,	16	6.9093	30.4006
255,	16,	16	7.2491	33.0204

57,	16,	16	0.4648	0.6557
81,	16,	16	0.3195	0.6796
105,	16,	16	0.4829	0.7474
130,	16,	16	0.2376	0.5929
156,	16,	16	0.1577	0.2665
182,	16,	16	0.3486	0.6515
208,	16,	16	0.4476	0.8348
235,	16,	16	0.3906	0.8748

dE 2000 Green

RGB	dE 2000	dE 1976
16, 30, 16	0.4470	0.4356
16, 45, 16	1.8323	2.3216
16, 60, 16	3.9258	9.6031
16, 75, 16	4.2593	12.6077
16, 90, 16	4.5348	15.6114
16, 105, 16	4.7356	18.4712
16, 120, 16	4.9190	21.1155
16, 135, 16	4.7417	22.3698
16, 150, 16	4.7742	24.3845
16, 165, 16	4.6867	25.7928
16, 180, 16	4.6143	27.0313
16, 195, 16	4.5791	28.1727
16, 210, 16	4.5736	29.4728
16, 225, 16	4.6144	30.9507
16, 235, 16	4.6174	31.2780
16, 255, 16	4.6783	33.3057

dE 2000 Green

RGB	dE 2000	dE 1976
16, 35, 16	0.6506	0.7078
16, 57, 16	0.6067	1.0599
16, 81, 16	0.1817	0.3495
16, 105, 16	0.3045	0.6447
16, 130, 16	0.3408	1.1780
16, 156, 16	0.2664	1.0274
16, 182, 16	0.3398	0.8090
16, 208, 16	0.1347	0.7225
16, 235, 16	0.3055	0.6603

dE 2000 Blue

RGB	dE 2000	dE 1976
16, 16, 30	0.3340	0.3339
16, 16, 45	1.1365	1.6667
16, 16, 60	1.8828	4.4746
16, 16, 75	2.2337	6.7637
16, 16, 90	1.6628	5.5473
16, 16, 105	1.5058	4.5311
16, 16, 120	1.5592	4.9767
16, 16, 135	1.3409	4.8194
16, 16, 150	1.3040	5.2119
16, 16, 165	1.2115	5.3437
16, 16, 180	1.0055	5.0174
16, 16, 195	0.9206	5.0386
16, 16, 210	0.8392	5.0957
16, 16, 225	0.7451	5.1974
16, 16, 235	0.7168	5.2343
16, 16, 255	0.7161	5.4905

dE 2000 Blue

RGB	dE 2000	dE 1976
16, 16, 35	0.3516	0.3747
16, 16, 57	0.3148	0.4919
16, 16, 81	0.3606	0.8434
16, 16, 105	0.4381	1.6170
16, 16, 130	0.3672	1.1983
16, 16, 156	0.2110	0.5905
16, 16, 182	0.2568	0.7164
16, 16, 208	0.3327	1.2507
16, 16, 235	0.2473	0.6217